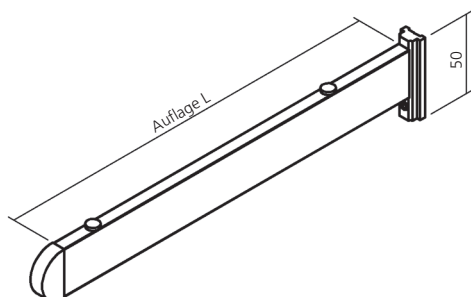
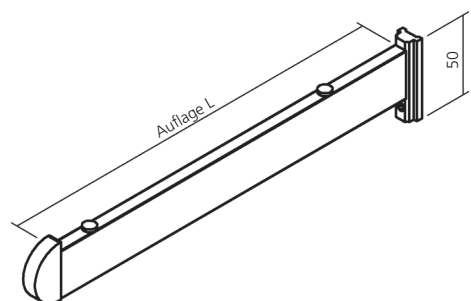


Stellschienen-system
Mounting rail system

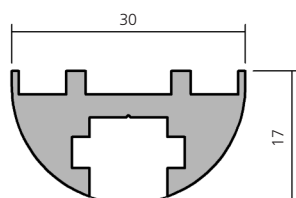
625



Glasbodenträger, Aluminium	150 mm	51415
Endkappe bündig	200 mm	51416
Bracket für glass shelf	250 mm	51417
end cap flush	300 mm	51418
	nach Angabe to indication	51419



Glasbodenträger, Aluminium	150 mm	51453
Endkappe überstehend	200 mm	51454
für 8 mm Glas	250 mm	51455
Bracket für glass shelf	300 mm	51456
end cap overlying	nach Angabe to indication	51457
for 8 mm glass		



Stellschiene, Aluminium	6000 mm	16818
alle 300 mm gebohrt		
Mounting rail		
drilled every 300 mm		



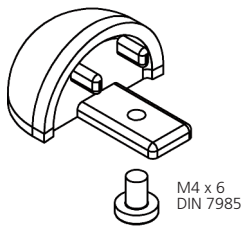
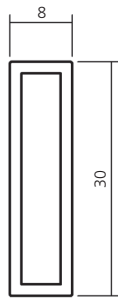
Einlegeprofil, Aluminium	6000 mm	16820
Insert profile		



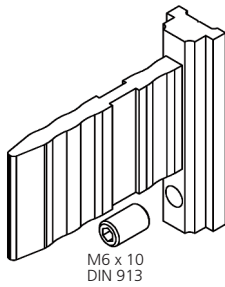
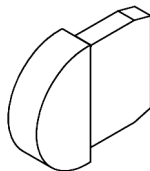
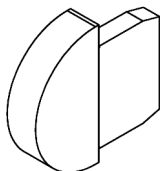
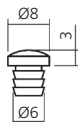
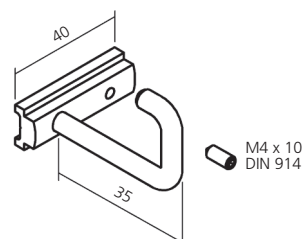
Anschlaggummi, Gummi schwarz	22431
Rubber stop, rubber black	

Stellschienen-system
 Mounting rail system

625


 Endkappe, Druckguß
 End cap, die cast
51426
 Rechteckrohr, Aluminium
 Rectangular tube

6000 mm

17035
 Trägerbefestigung, Aluminium
 Bracket fastening
51440
 Endkappe bündig, Aluminium
 End cap flush
51442
 Endkappe überstehend, Aluminium
 End cap overlying
51441
 Glasbodenaufgabe, Kunststoff
 Support of glass, plastic
51249
 Abrißtütenhalter, Aluminium
 Support for tear - off bags
51424